



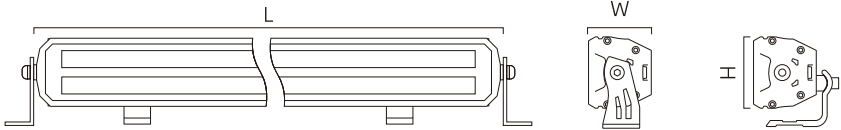
USER MANUAL

This user manual provides essential information to ensure you get the best performance and longevity from your new light bar.



COLIGHT Polar Bear Series **Dual Row** Light Bar

Technical Specifications



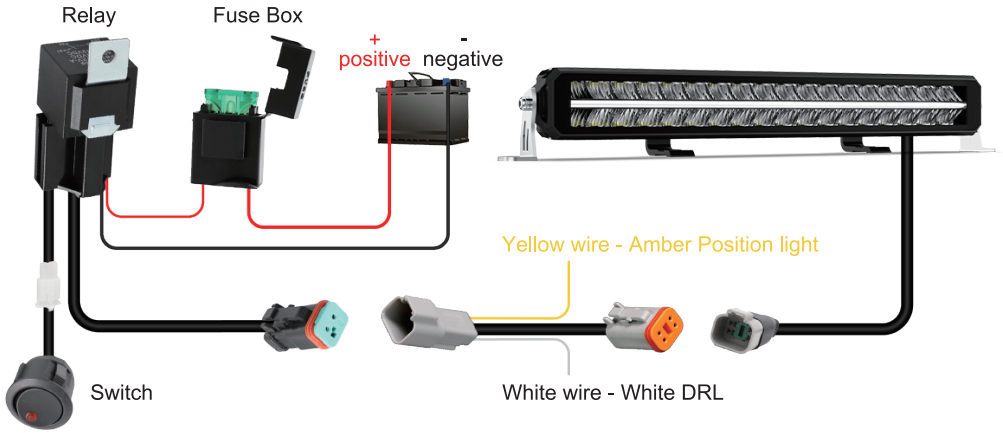
Size	L*W*H(Not include brackets)	Wattage	Lumen Output	Beam Distance
10 inch	309.6mm*63.2mm*72mm	46.8W	3666 lm	255.67 m
20 inch	560mm*63.2mm*72mm	91.44W	6570 lm	346.17 m
32 inch	810.6mm*63.2mm*72mm	127.7W	10435 lm	421.65 m
40 inch	1061mm*63.2mm*72mm	183.8W	14899 lm	480.22 m
52 inch	1311.6mm*63.2mm*72mm	200.4W	17831 lm	503.76 m

General Specifications

Housing Material	Die-cast Aluminum Alloy	Color Temperature	6000K White Main Beam
Lens Material	High-strength PC Lens	DRL	White&Amber
Waterproof Rating	IP68	Mounting Options	Side Mount & Bottom Mount
Voltage	DC 9-30V	Application	Truck / SUV / Off-road / Overlanding

Actual performance may vary depending on installation angle, vehicle voltage, and environmental conditions.

Wiring Diagram & Installation Instructions



We ALWAYS recommend installation and wiring to be carried out by a qualified auto electrician.

1. Locate an appropriate location in the vehicle for the switch mounting.
2. Route the harness to the mounting location. Do not secure at this time. The wiring will be zip-tied after the lights are installed and adjusted to ensure the wiring can reach the lights. Beware of sharp edges, abrasive surfaces, and heat sources. Re-route wiring as needed. Make sure when mounting the relay, attach it in a dry area where the wires coming out of the relay are facing down.
3. After the lights are mounted, attach the conversion cable in the package to the light connector. Then you'll get a DT-2 pin connector and yellow and white wires. NOTE: ONLY the black wire is to the Negative (-) side, the rest wire is to the Positive (+) side.
4. Attach the Yellow terminal to the Positive (+) side of the position light, and you'll get yellow position lights. Attach the white terminal to the Positive (+) side of the daytime running light, and you'll get white daytime running lights.
5. Secure any part of the wiring harness away from hazards using zip ties.

Warranty

COLIGHT provides a 2 years warranty covering manufacturing defects under normal use conditions.

- Covered:**
- LED failure
 - Manufacturing defects
 - Water leakage caused by product defects



Visit us on www.led-colight.com for your offroad needs.
For any additional assistance or inquiries, feel free to contact
our customer support at support@led-colight.com